



# Take control of emissions exposure and enable your strategy with Risk Manager

Simulate, Plan, Manage and Verify your FuelEU and EU ETS exposure effortlessly in one platform.





# EU ETS and FuelEU: Understand what you're up against

The EU has an aim of driving a 55% reduction in EU emissions by 2030. To support this goal, it has introduced new regulations for the maritime industry into its Fit for 55 package of legislation.

This began with the expansion of the EU Emissions Trading System (EU ETS) to the maritime sector in January 2024, which introduced a requirement for European Union Allowances (EUAs) to be submitted that are equal to a vessel's CO<sub>2</sub> emissions on EU and EEA routes.

The restrictions set out under the EU ETS are increasing exponentially. With EUAs equivalent to 40% of verified emissions required in September 2025, rising to 70% in September 2026, and then 100% in September 2027.<sup>1</sup>

FuelEU is introducing additional regulatory challenges to this complex landscape. The adoption of renewable and low-carbon fuels in maritime transport is now required, and monitoring and reporting of the Greenhouse Gas (GHG) intensity of energy used onboard must be completed, with penalties for non-compliance.

This all adds complexity to maritime operations and poses new risks for ship managers, shipowners, operators and charterers.

Understanding your role and meeting today's and tomorrow's regulatory requirements is crucial to mitigate risk, minimise potential penalties and manage counterparty exposure.

**How can you effectively handle FuelEU and EU ETS exposure and ensure compliance?**

**Find out more about FuelEU and EU ETS**

<sup>1</sup> LR: EU ETS and FuelEU call for proactive risk management



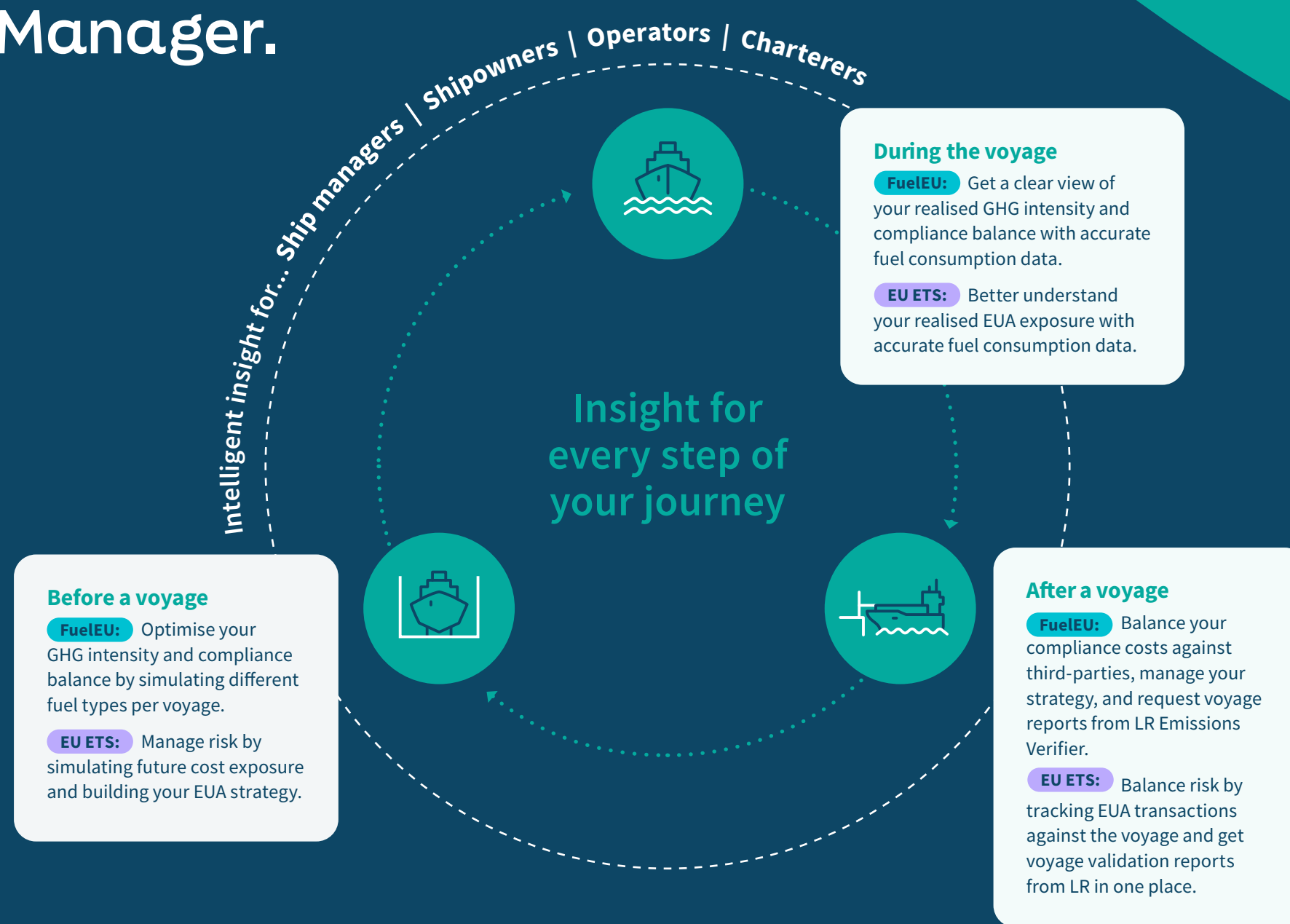
# Introducing Risk Manager.

## Not just another compliance tool.

Access a complete view of your FuelEU and EU ETS exposure and gain insights that help you actively make strategic decisions in one easy-to-use platform.

Risk Manager leverages our extensive global experience in vessel routing backed by the industry's best vessel models, weather forecasts, and route optimisation engine to help you accurately manage your FuelEU and EUA exposure.

You'll gain the insights to optimise compliance strategies, track performance, manage costs, and stay connected with other stakeholders at every stage of a voyage.



# Risk Manager FuelEU:

## Effortlessly oversee exposure and compliance balance

Get a complete view from initial simulations based on fuel choice, to changes in exposure and pooling scenarios across four key areas of functionality.



**Accurately forecast voyage exposure with our AI-driven simulation tool, powered by our leading machine-learning vessel models and a multi-objective routing engine for optimal decision making.**

- Understand your voyage's GHG intensity and compliance balance by generating voyage scenarios with defined voyage parameters and fuel options.
- Manage your fuel strategy and compliance balance by defining GHG intensity targets and minimising the financial impact of FuelEU.
- Build and simulate multi-leg voyages on one easy-to-use platform.



**Easily understand your compliance balance and underlying consumption data while planning ahead and simulating the financial benefits of banking, borrowing, and pooling.**

- Visualise FuelEU compliance at both fleet and vessel level based on GHG reduction targets.
- Identify risks and assess favourable pooling options based on current and projected performance.
- Build a profitable FuelEU strategy by simulating third-party vessel pooling and securing early agreements to avoid surplus premiums.



**Gain actionable insights and full visibility into potential risks so you can adjust your strategy effectively.**

- Automatically ingest Noon Report data for a holistic view of your compliance status.
- Track your vessels' GHG intensity and compliance balance as it develops, enabling informed fuel choices.
- Easily track and settle compliance balance with counterparties.



**Gain access to verifier-validated voyage reports to enhance stakeholder alignment under FuelEU.**

- Simulate pooling scenarios and take control of your compliance balance ahead of regulatory deadlines.
- Access voyage validated reports and consumption statements with our seamless integration with LR Emissions Verifier.
- Easily submit year-end data to an independent verifier to facilitate annual verification.

# Risk Manager EU ETS: Cover all compliance angles

From initial simulations to changes in exposure, the Risk Manager EU ETS solution provides everything you need to gain a comprehensive picture of your fleet's compliance across four key areas.



## Simulate

Accurately forecast voyage exposure with our AI-driven simulation tool, powered by our leading machine-learning vessel models and a multi-objective routing engine.

- Define optimisation scenarios and voyage parameters.
- Compare simulated scenarios to assess exposure.
- Save voyages to a ship and allocate exposure to responsible parties.
- Build and simulate multi-leg voyages on one easy-to-use platform.
- Analyse EUA costs and CII impact for the voyage.



## Plan

Quickly grasp your exposure and explore the underlying data with ease, ensuring alignment and efficient management of owed and outstanding balances.

- Gain insights and situational awareness of your total exposure from start to finish.
- Visualise EUA balances to be surrendered and see your EUA burn rate.
- Analyse data at the fleet or vessel level.
- Obtain detailed voyage history and associated emissions statements.
- Connect accurate forecast and actual exposure, with live spot prices and Union Registry accounting.



## Manage

Gain actionable insights and full visibility into potential risks so you can adjust your strategy effectively.

- Automatically ingest Noon Report data for a holistic view of your compliance status.
- View emissions history, historical voyages, and reported data.
- Easily import transaction history from the Union Registry Account.
- Manage and settle EUA balances with third-parties.



## Verify

Gain access to verifier-validated voyage reports to enhance stakeholder alignment under EU ETS.

- Access voyage validated reports and consumption statements with our seamless integration with LR Emissions Verifier.
- Easily submit year-end data to an independent verifier to facilitate annual verification.

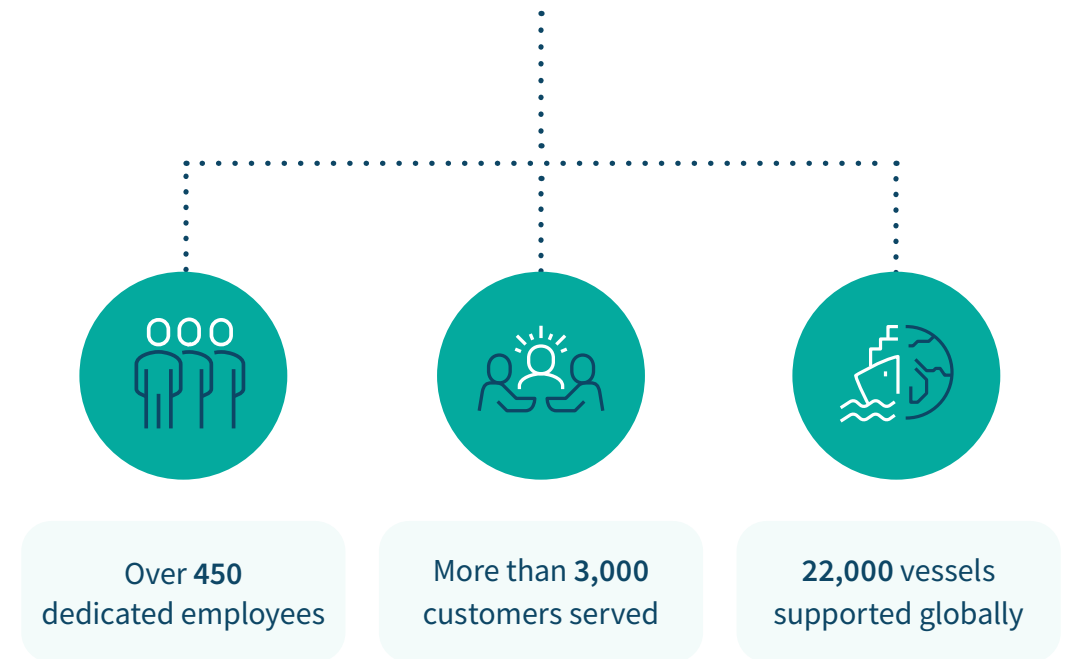


# Choose LR OneOcean for a comprehensive, reliable, and forward-thinking approach to Emissions Management.

Our team includes experts in product development, performance modelling, and vessel operations, ensuring cutting-edge technology and exceptional service.

By aligning with Lloyd's Register's vision and values, LR OneOcean combines innovative digital solutions with deep industry expertise to optimise voyage performance, ensure compliance, and enhance operational efficiency.

OneOcean, a core division of Lloyd's Register, offers unparalleled digital solutions within the maritime industry





# Take control of emissions exposure and enable your strategy with Risk Manager.

Visit [oneocean.com/riskmanager](https://oneocean.com/riskmanager) to find out more.

